



LAND
REGISTRY
SERVICES

Title Search



NEW SOUTH WALES LAND REGISTRY SERVICES - TITLE SEARCH

FOLIO: 634/36612

SEARCH DATE	TIME	EDITION NO	DATE
-----	----	-----	-----
21/7/2021	11:53 AM	-	-

VOL 9599 FOL 163 IS THE CURRENT CERTIFICATE OF TITLE

LAND

LOT 634 IN DEPOSITED PLAN 36612

LOCAL GOVERNMENT AREA CANTERBURY-BANKSTOWN

PARISH OF LIBERTY PLAINS COUNTY OF CUMBERLAND

TITLE DIAGRAM DP36612

FIRST SCHEDULE

NEW SOUTH WALES LAND AND HOUSING CORPORATION

SECOND SCHEDULE (0 NOTIFICATIONS)

NIL

NOTATIONS

UNREGISTERED DEALINGS: NIL

*** END OF SEARCH ***

BGX47-KM

PRINTED ON 21/7/2021

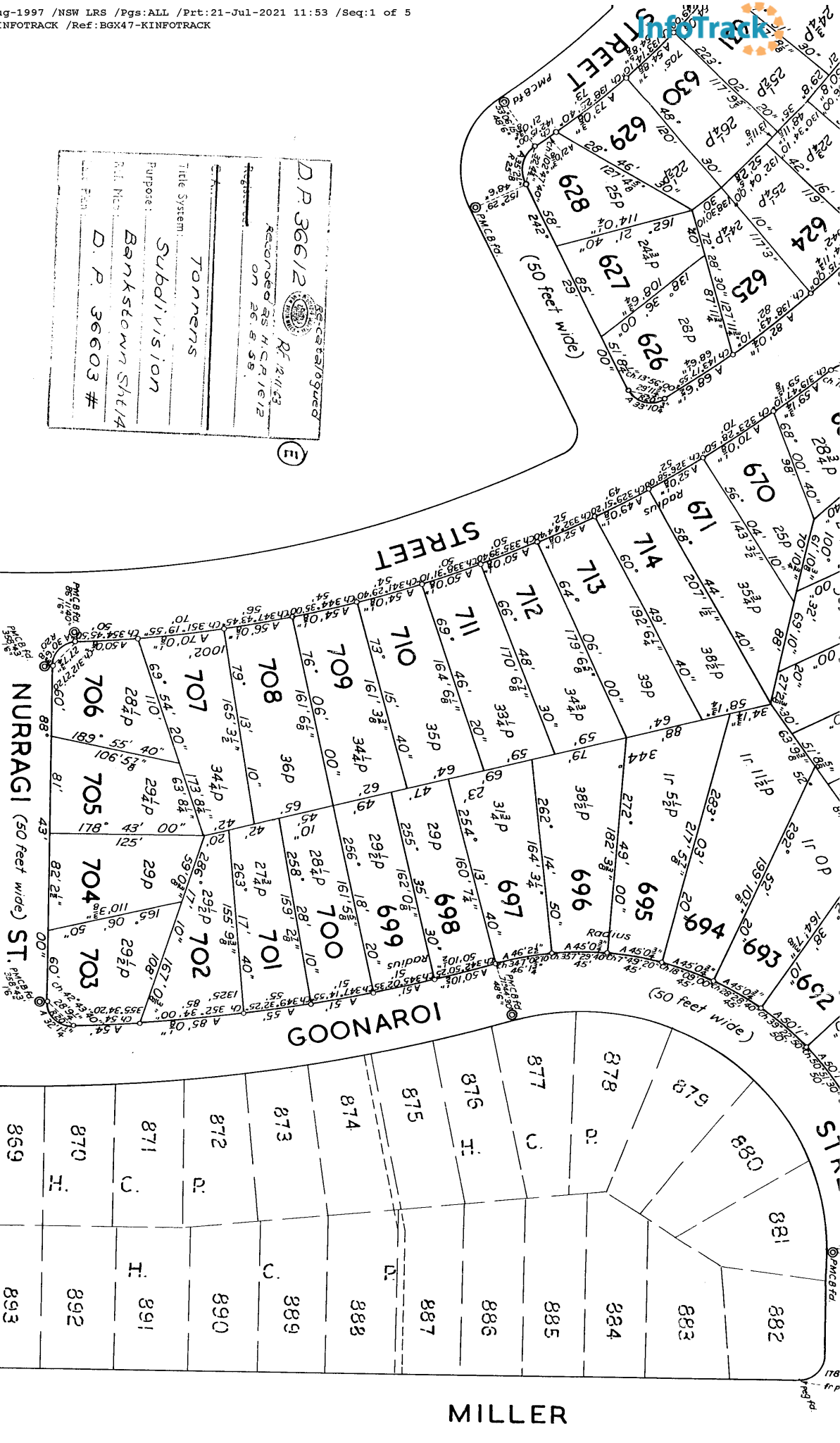
* Any entries preceded by an asterisk do not appear on the current edition of the Certificate of Title. Warning: the information appearing under notations has not been formally recorded in the Register. InfoTrack an approved NSW Information Broker hereby certifies that the information contained in this document has been provided electronically by the Registrar General in accordance with Section 96B(2) of the Real Property Act 1900.

Ref1482 sh6

Subscribed and declared before me at Sydney
this third day of August, A.D. 1955

D.P. 36612 Registered
Recorded as H.C.P. 1612
on 26.8.55.

Tonnens
Subdivision
Banksstown Sh 1/4
D.P. 36603 #



I, Angus Riggall Blair, of A.R. Blair and Stuckey, 39 Martin Place, Sydney, a Surveyor registered under the Surveyor's Act 1929, do hereby solemnly and sincerely declare (a) that all boundaries and measurements shown on this plan are correct, (b) that all survey marks found and relevant physical objects on or adjacent to the boundaries are correctly represented, (c) that all physical objects indicated actually exist in the positions shown, (d) that the whole of the material facts in relation to the land are correctly represented, (e) that the survey represented in this plan has been made in accordance with the Survey Practice Regulations, 1933, under my immediate supervision, and was completed on 11th November, 1953, and the reference marks have been placed as shown hereon. And I make this solemn declaration, conscientiously believing the same to be true, and by virtue of the provisions of the Oaths Act, 1900.

(Signature)

Surveyor registered under the Surveyor's Act 1929.

G403011 11.11.55

LOWANA ST.
(60 feet wide)

$$\frac{M}{N}$$

PLAN

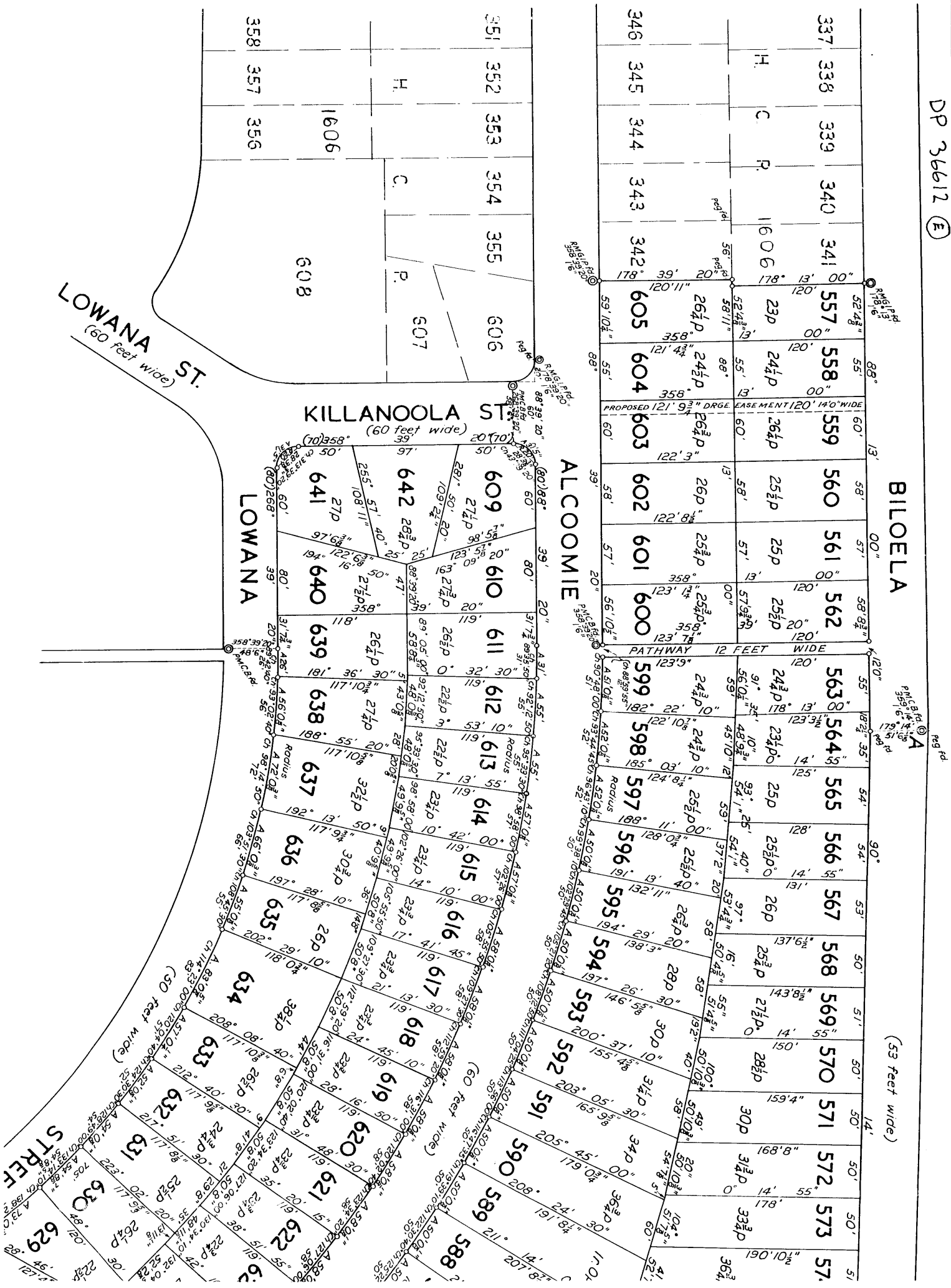
*of subdivision of part of Lot 1023 and ^{the whole of} Lots 1023A, 1024, 1029 and 1030, H.C.P. 1603
Parish of Liberty Plains — County of Cumberland
Scale : 80 feet to one inch*

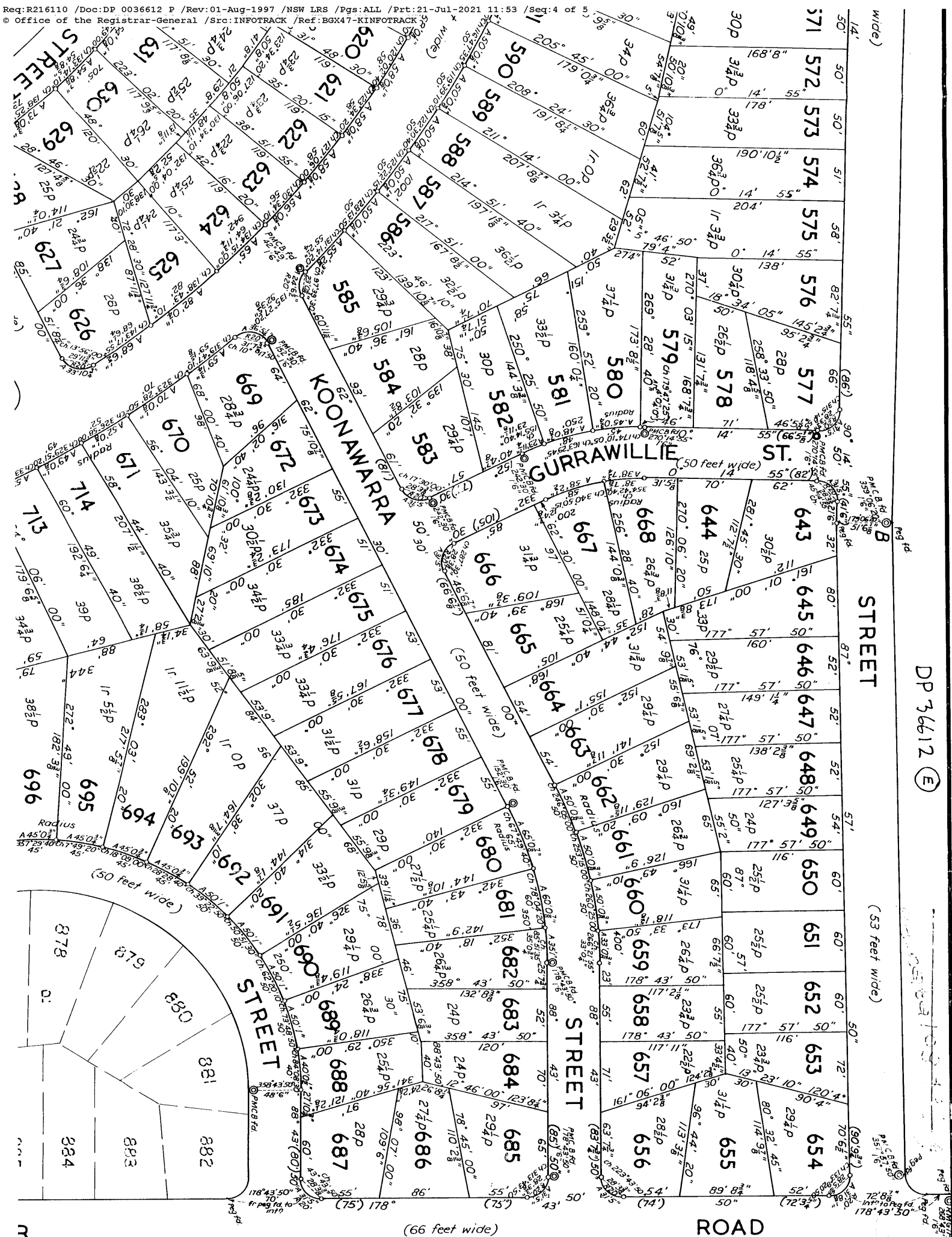
Scale: 80 feet to one inch

Datum Line of Azimuth A-B

③ 3/6/6.12

Re





CONVERSION TABLE ADDED IN
REGISTRAR GENERAL'S DEPARTMENT

CONVERSION TABLE ADDED IN
REGISTRAR GENERAL'S DEPARTMENT

CONVERSION TABLE ADDED IN
REGISTRAR GENERAL'S DEPARTMENT

CONVERSION TABLE ADDED IN
REGISTRAR GENERAL'S DEPARTMENT

CONVERSION TABLE ADDED IN
REGISTRAR GENERAL'S DEPARTMENT

CONVERSION TABLE ADDED IN
REGISTRAR GENERAL'S DEPARTMENT

DP 36612

DP 36612 CONTINUED

DP 36612 CONTINUED

DP 36612 CONTINUED

DP 36612 CONTINUED

DP 36612 CONTINUED

FEET INCHES	METRES
1 1/4	0.032
1 3/8	0.045
1 1/2	0.050
1 5/8	0.055
1 3/4	0.062
1 7/8	0.069
2	0.076
2 1/8	0.083
2 1/4	0.089
2 3/8	0.096
2 1/2	0.103
2 5/8	0.110
2 3/4	0.117
2 7/8	0.124
3	0.130
3 1/8	0.137
3 1/4	0.143
3 3/8	0.150
3 1/2	0.156
3 5/8	0.163
3 3/4	0.169
3 7/8	0.176
4	0.183
4 1/8	0.190
4 1/4	0.196
4 3/8	0.203
4 1/2	0.209
4 5/8	0.216
4 3/4	0.222
4 7/8	0.229
5	0.235
5 1/8	0.242
5 1/4	0.248
5 3/8	0.255
5 1/2	0.261
5 5/8	0.268
5 3/4	0.274
5 7/8	0.281
6	0.287
6 1/8	0.294
6 1/4	0.300
6 3/8	0.307
6 1/2	0.313
6 5/8	0.320
6 3/4	0.326
6 7/8	0.333
7	0.339
7 1/8	0.346
7 1/4	0.352
7 3/8	0.359
7 1/2	0.365
7 5/8	0.372
7 3/4	0.378
7 7/8	0.385
8	0.391
8 1/8	0.398
8 1/4	0.404
8 3/8	0.411
8 1/2	0.417
8 5/8	0.424
8 3/4	0.430
8 7/8	0.437
9	0.443
9 1/8	0.450
9 1/4	0.456
9 3/8	0.463
9 1/2	0.469
9 5/8	0.476
9 3/4	0.482
9 7/8	0.489
10	0.495
10 1/8	0.502
10 1/4	0.508
10 3/8	0.515
10 1/2	0.521
10 5/8	0.528
10 3/4	0.534
10 7/8	0.541
11	0.547
11 1/8	0.554
11 1/4	0.560
11 3/8	0.567
11 1/2	0.573
11 5/8	0.580
11 3/4	0.586
11 7/8	0.593
12	0.599
12 1/8	0.606
12 1/4	0.612
12 3/8	0.619
12 1/2	0.625
12 5/8	0.632
12 3/4	0.638
12 7/8	0.645
13	0.651
13 1/8	0.658
13 1/4	0.664
13 3/8	0.671
13 1/2	0.677
13 5/8	0.684
13 3/4	0.690
13 7/8	0.697
14	0.703
14 1/8	0.710
14 1/4	0.716
14 3/8	0.723
14 1/2	0.729
14 5/8	0.736
14 3/4	0.742
14 7/8	0.749
15	0.755
15 1/8	0.762
15 1/4	0.768
15 3/8	0.775
15 1/2	0.781
15 5/8	0.788
15 3/4	0.794
15 7/8	0.801
16	0.807
16 1/8	0.814
16 1/4	0.820
16 3/8	0.827
16 1/2	0.833
16 5/8	0.840
16 3/4	0.846
16 7/8	0.853
17	0.859
17 1/8	0.866
17 1/4	0.872
17 3/8	0.879
17 1/2	0.885
17 5/8	0.892
17 3/4	0.898
17 7/8	0.905
18	0.911
18 1/8	0.918
18 1/4	0.924
18 3/8	0.931
18 1/2	0.937
18 5/8	0.944
18 3/4	0.950
18 7/8	0.957
19	0.963
19 1/8	0.970
19 1/4	0.976
19 3/8	0.983
19 1/2	0.989
19 5/8	0.996
19 3/4	1.002
19 7/8	1.009
20	1.015
20 1/8	1.022
20 1/4	1.028
20 3/8	1.035
20 1/2	1.041
20 5/8	1.048
20 3/4	1.054
20 7/8	1.061
21	1.067
21 1/8	1.074
21 1/4	1.080
21 3/8	1.087
21 1/2	1.093
21 5/8	1.100
21 3/4	1.106
21 7/8	1.113
22	1.119
22 1/8	1.126
22 1/4	1.132
22 3/8	1.139
22 1/2	1.145
22 5/8	1.152
22 3/4	1.158
22 7/8	1.165
23	1.171
23 1/8	1.178
23 1/4	1.184
23 3/8	1.191
23 1/2	1.197
23 5/8	1.204
23 3/4	1.210
23 7/8	1.217
24	1.223
24 1/8	1.230
24 1/4	1.236
24 3/8	1.243
24 1/2	1.249
24 5/8	1.256
24 3/4	1.262
24 7/8	1.269
25	1.275
25 1/8	1.282
25 1/4	1.288
25 3/8	1.295
25 1/2	1.301
25 5/8	1.308
25 3/4	1.314
25 7/8	1.321
26	1.327
26 1/8	1.334
26 1/4	1.340
26 3/8	1.347
26 1/2	1.353
26 5/8	1.360
26 3/4	1.366
26 7/8	1.373
27	1.379
27 1/8	1.386
27 1/4	1.392
27 3/8	1.399
27 1/2	1.405
27 5/8	1.412
27 3/4	1.418
27 7/8	1.425
28	1.431
28 1/8	1.438
28 1/4	1.444
28 3/8	1.451
28 1/2	1.457
28 5/8	1.464
28 3/4	1.470
28 7/8	1.477
29	1.483
29 1/8	1.490
29 1/4	1.496
29 3/8	1.503
29 1/2	1.509
29 5/8	1.516
29 3/4	1.522
29 7/8	1.529
30	1.535
30 1/8	1.542
30 1/4	1.548
30 3/8	1.555
30 1/2	1.561
30 5/8	1.568
30 3/4	1.574
30 7/8	1.581
31	1.587
31 1/8	1.594
31 1/4	1.600
31 3/8	1.607
31 1/2	1.613
31 5/8	1.620
31 3/4	1.626
31 7/8	1.633
32	1.639
32 1/8	1.646
32 1/4	1.652
32 3/8	1.659
32 1/2	1.665
32 5/8	1.672
32 3/4	1.678
32 7/8	1.685
33	1.691
33 1/8	1.698
33 1/4	1.704
33 3/8	1.711
33 1/2	1.717
33 5/8	1.724
33 3/4	1.730
33 7/8	1.737
34	1.743
34 1/8	1.750
34 1/4	1.756
34 3/8	1.763
34 1/2	1.769
34 5/8	1.776
34 3/4	1.782
34 7/8	1.789
35	1.795
35 1/8	1.802
35 1/4	1.808
35 3/8	1.815
35 1/2	1.821
35 5/8	1.828
35 3/4	1.834
35 7/8	1.841
36	1.847
36 1/8	1.854
36 1/4	1.860
36 3/8	1.867
36 1/2	1.873
36 5/8	1.880
36 3/4	1.886
36 7/8	1.893
37	1.899
37 1/8	1.906
37 1/4	1.912
37 3/8	1.919
37 1/2	1.925
37 5/8	1.932
37 3/4	1.938
37 7/8	1.945
38	1.951
38 1/8	1.958
38 1/4	1.964
38 3/8	1.971
38 1/2	1.977
38 5/8	1.984
38 3/4	1.990
38 7/8	1.997
39	2.003
39 1/8	2.010
39 1/4	2.016
39 3/8	2.023
39 1/2	2.029
39 5/8	2.036
39 3/4	2.042
39 7/8	2.049
40	2.055
40 1/8	2.062
40 1/4	2.068
40 3/8	2.075
40 1/2	2.081
40 5/8	2.088
40 3/4	2.094
40 7/8	2.101
41	2.107
41 1/8	2.114
41 1/4	2.120
41 3/8	2.127
41 1/2	2.133
41 5/8	2.140
41 3/4	2.146
41 7/8	2.153
42	2.159
42 1/8	2.166
42 1/4	2.172
42 3/8	2.179
42 1/2	2.185
42 5/8	2.192
42 3/4	2.198
42 7/8	2.205
43	2.211
43 1/8	2.218
43 1/4	2.224
43 3/8	2.231
43 1/2	2.237
43 5/8	2.244
43 3/4	2.250
43 7/8	2.257
44	2.263
44 1/8	2.270
44 1/4	2.276
44 3/8	2.283
44 1/2	2.289
44 5/8	2.296
44 3/4	2.302
44 7/8	2.309
45	2.315
45 1/8	2.322
45 1/4	2.328
45 3/8	2.335
45 1/2	2.341
45 5/8	2.348
45 3/4	2.354
45 7/8	2.361
46	2.367
46 1/8	2.374
46 1/4	2.380
46 3/8	2.387
46 1/2	2.393
46 5/8	2.400
46 3/4	2.406
46 7/8	2.413
47	2.419
47 1/8	2.426
47 1/4	2.432
47 3/8	2.439
47 1/2	2.445
47 5/8	2.452
47 3/4	2.458
47 7/8	2.465
48	2.471
48 1/8	2.478
48 1/4	2.484
48 3/8	2.491
48 1/2	2.497
48 5/8	2.504
48 3/4	2.510
48 7/8	2.517
49	2.523
49 1/8	2.530
49 1/4	2.536
49 3/8	2.543
49 1/2	2.549
49 5/8	2.556
49 3/4	2.562
49 7/8	2.569
50	2.575
50 1/8	2.582
50 1/4	2.588
50 3/8	2.595
50 1/2	2.601
50 5/8	2.608
50 3/4	2.614
50 7/8	2.621
51	2.627
51 1/8	2.634
51 1/4	2.640
51 3/8	2.647
51 1/2	2.653
51 5/8	2.660
51 3/4	2.666
51 7/8	2.673
52	2.679
52 1/8	2.686
52 1/4	2.692
52 3/8	2.699
52 1/2	2.705
52 5/8	2.712
52 3/4	2.718
52 7/8	2.725
53	2.731
53 1/8	2.738
53 1/4	2.744
53 3/8	2.751
53 1/2	2.757
53 5/8	2.764
53 3/4	2.770
53 7/8	2.777
54	2.783
54 1/8	2.790
54 1/4	2.796
54 3/8	2.803
54 1/2	2.809
54 5/8	2.816
54 3/4	2.822
54 7/8	2.829
55	2.835
55 1/8	2.842
55 1/4	2.848
55 3/8	2.855
55 1/2	2.861
55 5/8	2.868
55 3/4	2.874
55 7/8	2.881
56	2.887
56 1/8	2.894
56 1/4	2.900
56 3/8	2.907
56 1/2	2.913
56 5/8	2.920
56 3/4	2.926
56 7/8	2.933
57	2.939
57 1/8	2.946
57 1/4	2.952
57 3/8	2.959
57 1/2	2.965
57 5/8	2.972
57 3/4	2.978
57 7/8	2.985
58	2.991
58 1/8	2.998
58 1/4	3.004
58 3/8	3.011
58 1/2	3.017
58 5/8	3.024
58 3/4	3.030
58 7/8	3.037
59	3.043
59 1/8	3.050
59 1/4	3.056
59 3/8	3.063
59 1/2	3.069
59 5/8	3.076
59 3/4	3.082
59 7/8	3.089
60	3.095
60 1/8	3.102
60 1/4	3.108
60 3/8	3.115
60 1/2	3.121
60 5/8	3.128
60 3/4	3.134
60 7/8	3.141
61	3.147